



SELF BRIEFING

We are happy you are participating at HWW 2019!

Please read this selfbriefing tutorial for Hahnweide gliding competition
2019

Attachment to local procedures (Ausführungsbestimmungen)

CONTENT

- 1. Welcome to the Hahnweide
- 2. Briefing
- 3. Grid & Take off
- 4. Airspace & Frequencies
- 5. Competition Rules
- 6. Landing & Scoring

1. WELCOME TO THE HAHNWEIDE

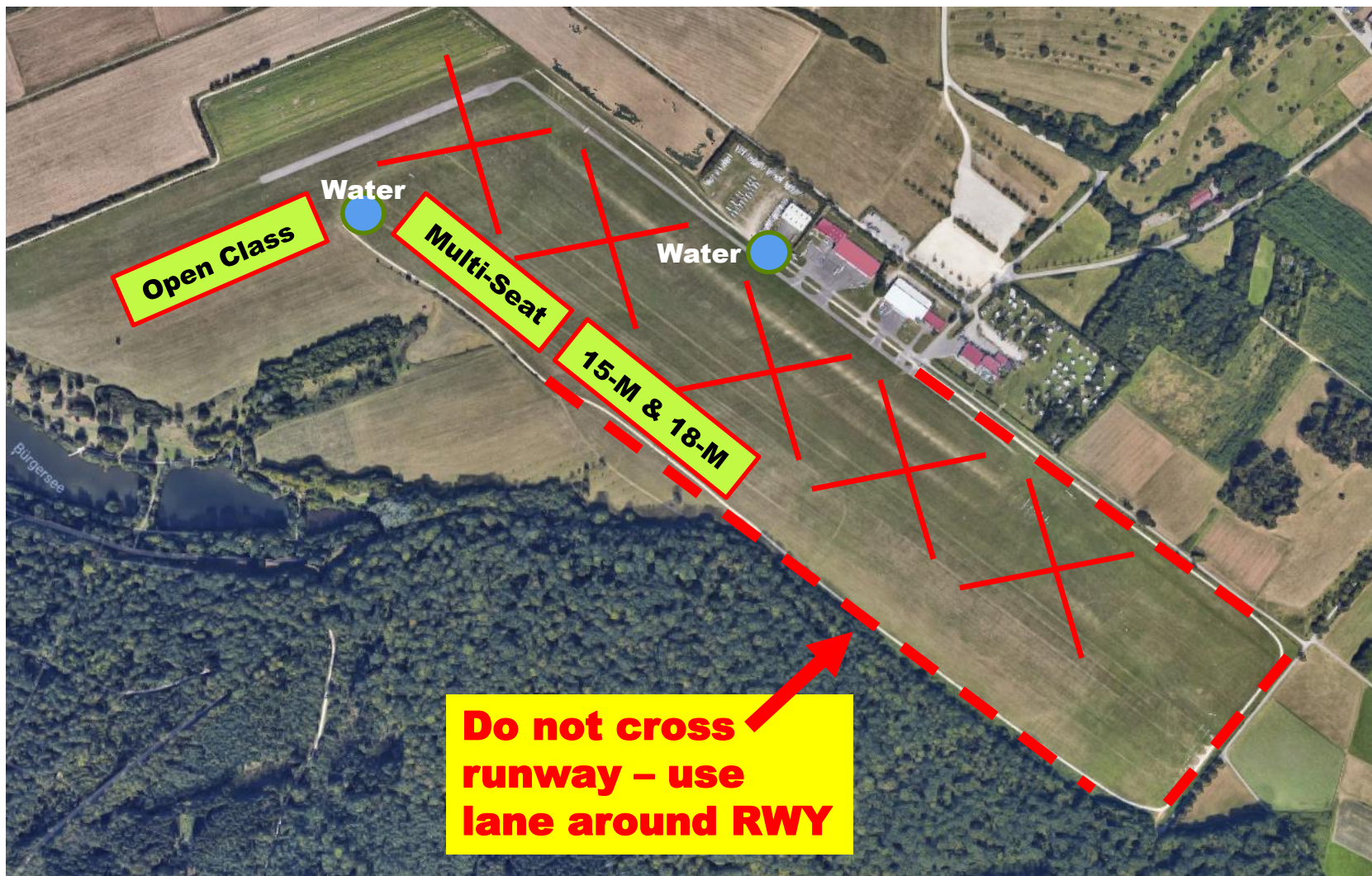


- 1.1 Arriving
- 1.2 Trailer parking
- 1.3 Camping

1. 1 ARRIVING

- If you arrive at Hahnweide the week before the competition, please park your trailer on the northern side of the Hahnweide
- Move trailers to the southern side of the Hahnweide not before Thursday.
- Arriving on Friday please follow the signs to the trailer-parking areas of your class
- **Please do not cross the runways!!**

1.2 TRAILER PARKING



1.3 CAMPING

- If you would like to pitch a tent or park your caravan please look for **Werner Heiner** (mobile phone: +49172-6702103)
- Please do not drive in the camping area by car during the competition
- NO CAMPING ON THE AIRFIELD! CAMPING ONLY ON THE CAMP SITE!



2. BRIEFING

- Daily 10 AM
- Any changes distributed via SMS to all competitors
- Up-to-date information on the website
- Information by radio (in the grid)

3. GRID & TAKE OFF

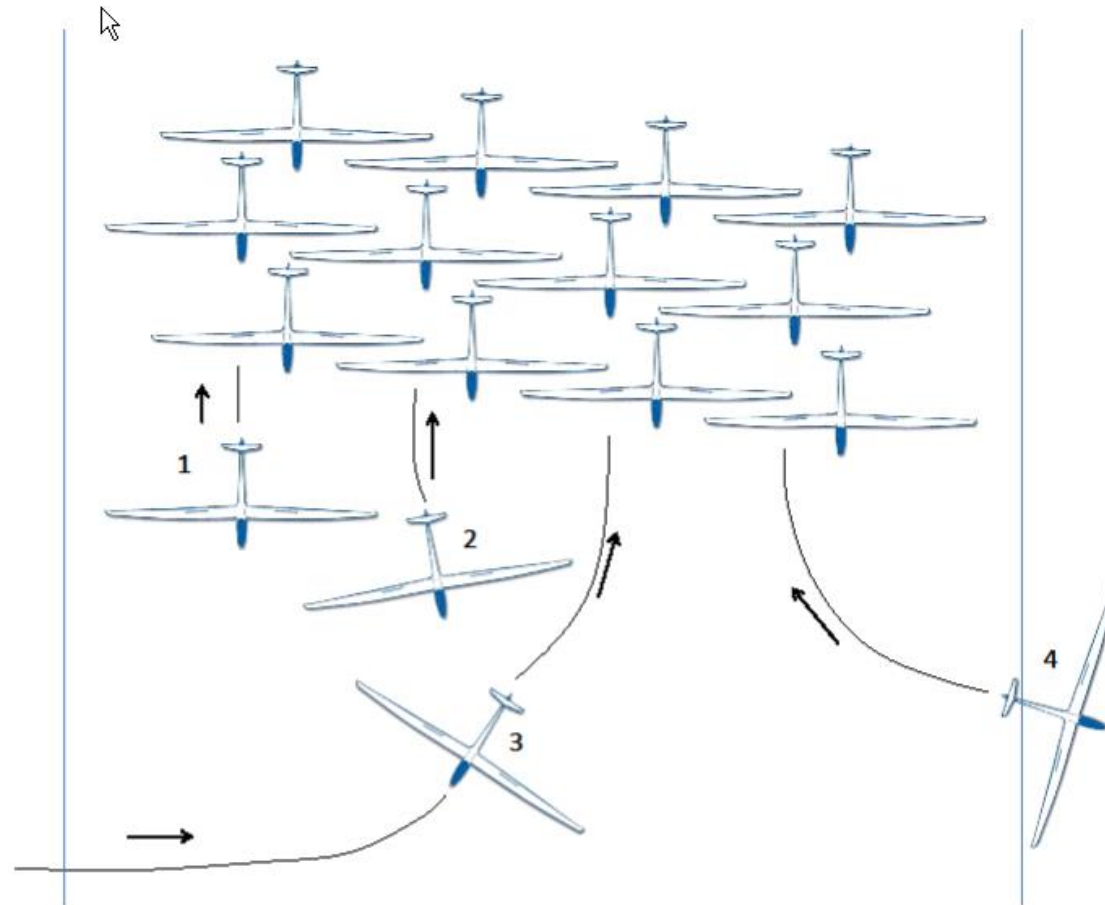
- 3.1 Rules for gridding
- 3.2 Grid Runway 31
- 3.3 Grid Runway 13
- 3.4 Grid Runway 25
- 3.5 Release Area & Self Launcher

3.1 RULES FOR GRID

- Normal flying operations on RWY 25/07 during gridding
- do not drive on the runway!
- No grid order within your class

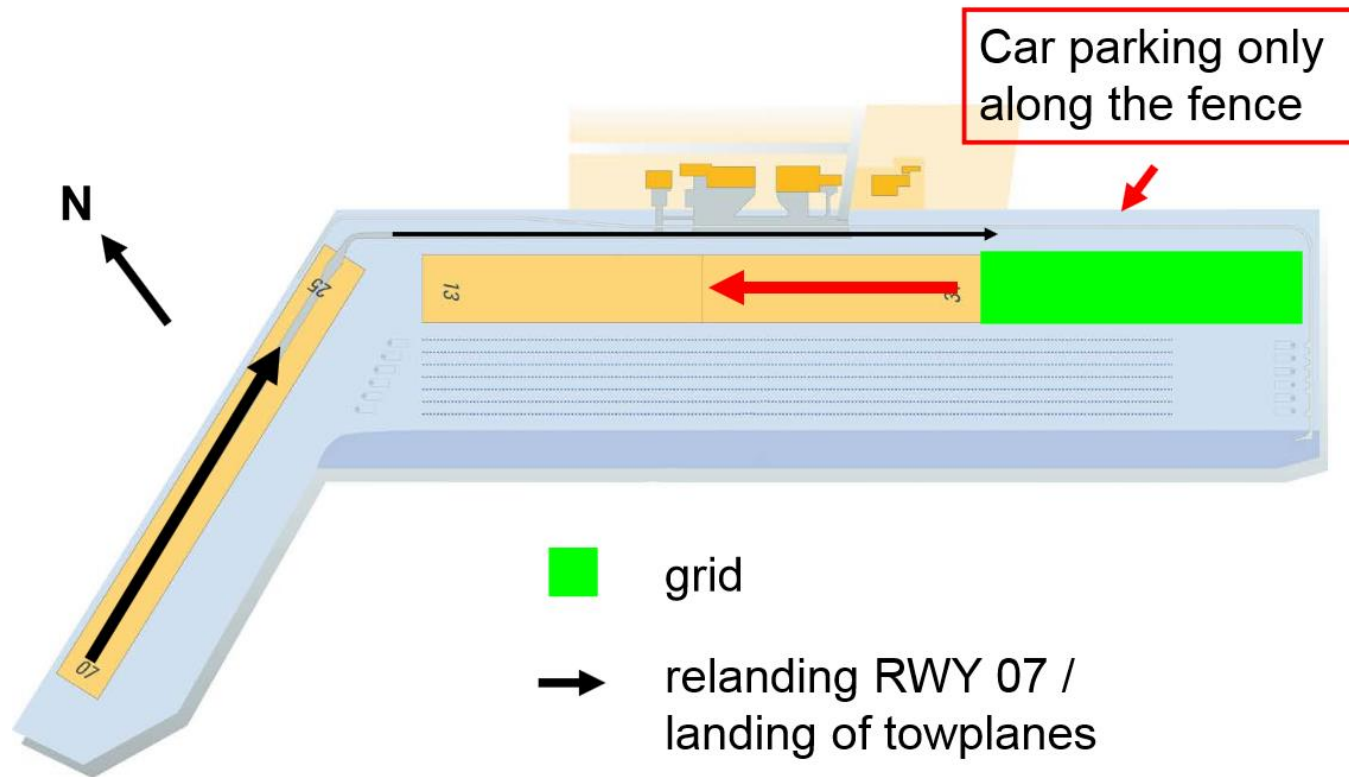
3.1 RULES FOR GRID

People will
instruct you
finding your
position



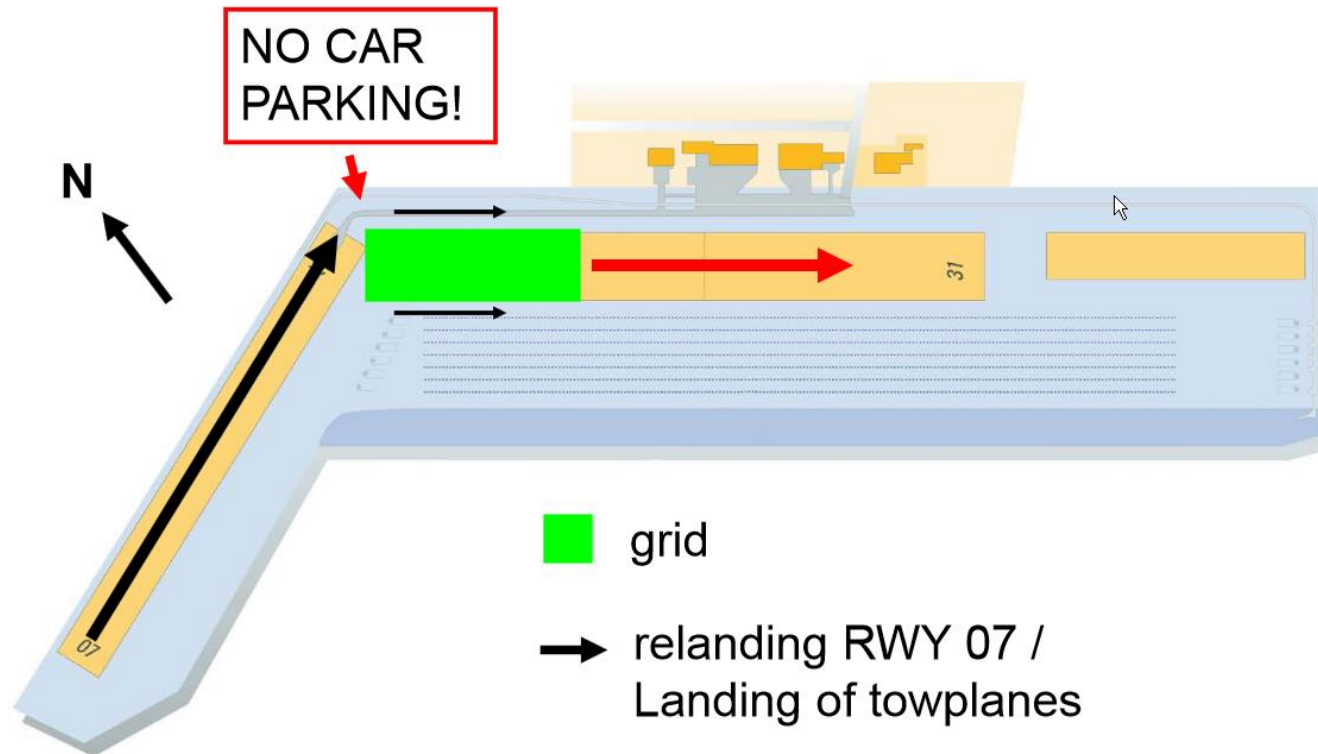
3.2 GRID RUNWAY 31

Take Off RWY 31



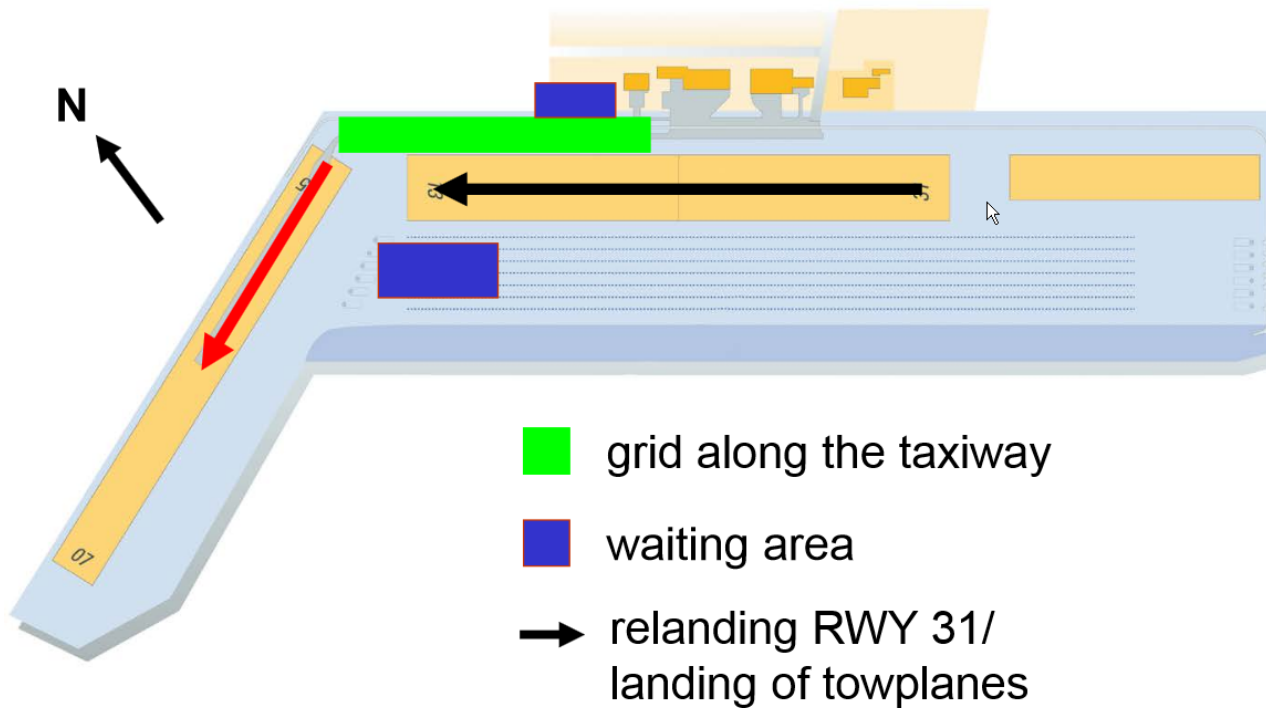
3.3 GRID RUNWAY 13

Take Off RWY 13



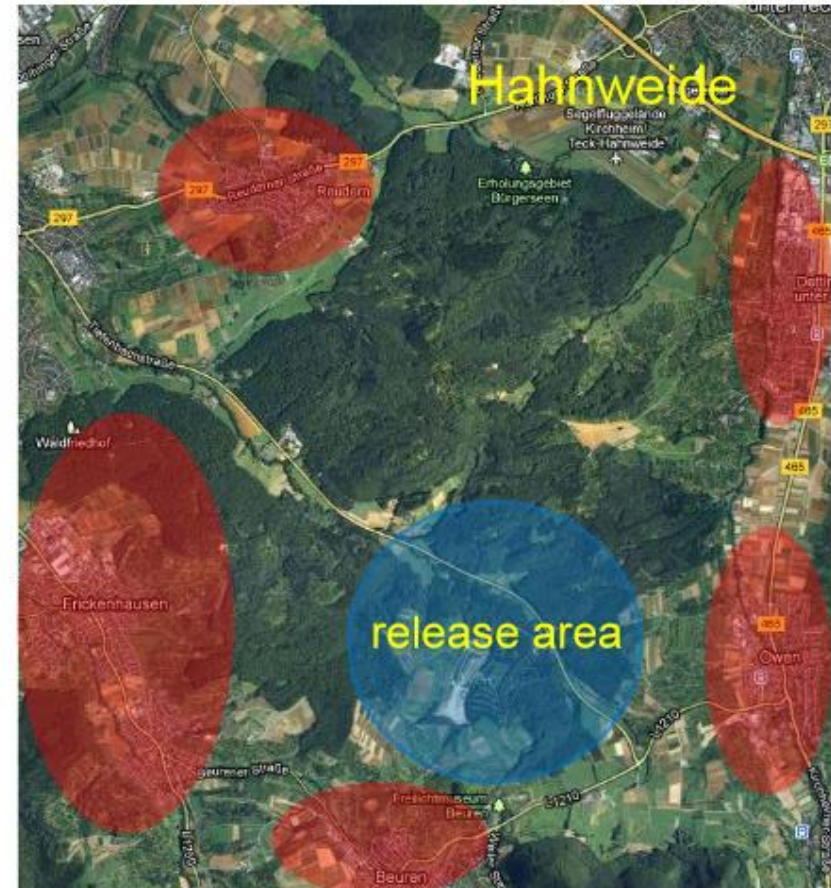
3.4 GRID RUNWAY 25

Take Off RWY 25



3.5 RELEASE AREA & SELF LAUNCHER

- Self launching gliders have to follow the towplanes to the release area south of Hahnweide
- Release altitude on task sheet / by radio
- for Turbos: engine test min 20 minutes prior crossing the start line at min 500 m GND.
- No engine close to villages.



4. AIRSPACE & FREQUENCIES

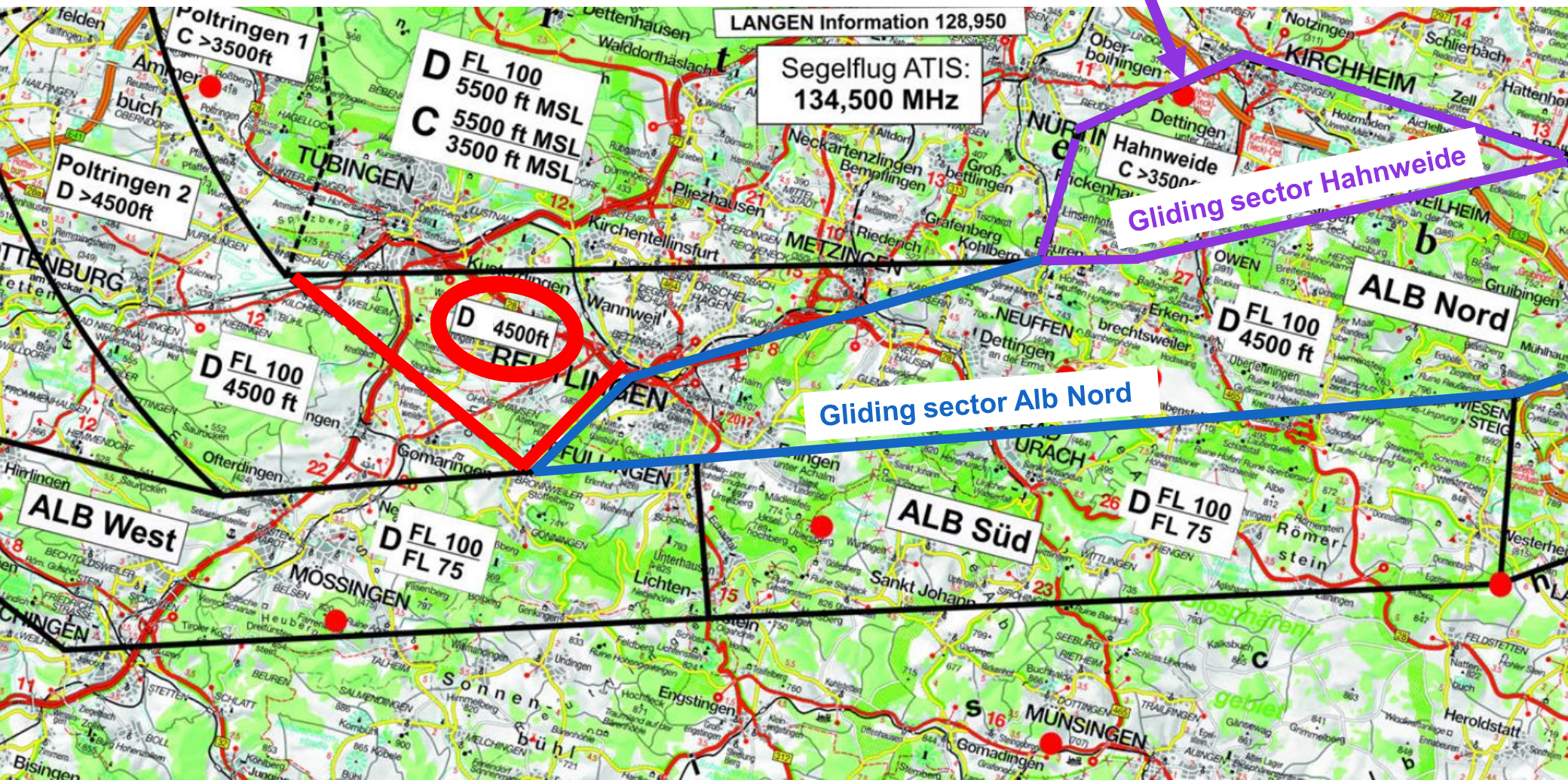
- 4.1 Airspace Stuttgart
- 4.2 Glider Sectors
- 4.3 Frequencies

4.1 AIRSPACE STUTTGART

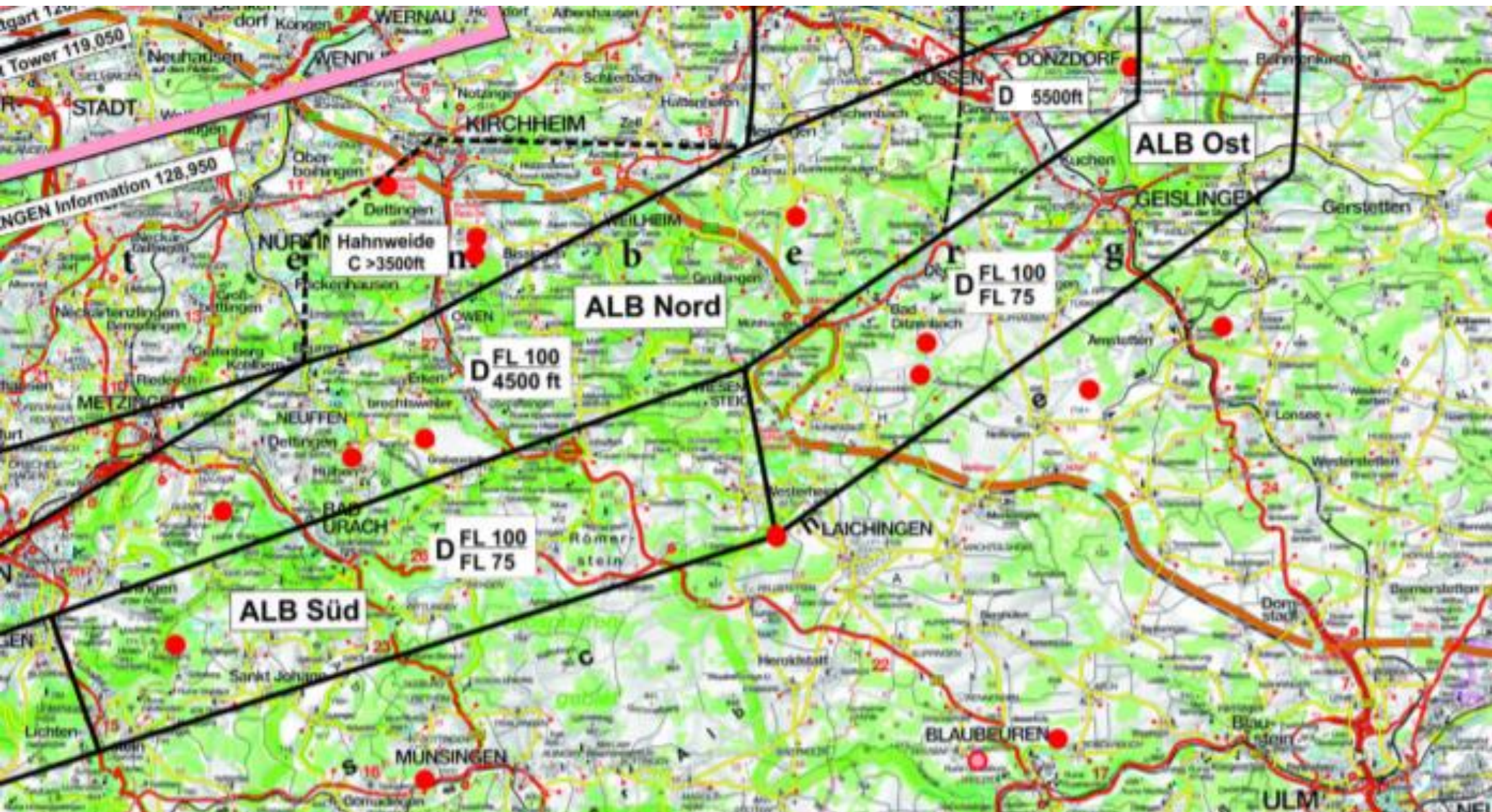
Typically we get the following clearances:

- Sector Hahnweide: 5.000 ft
- Sector Alb North: 6.000 ft

Hahnweide



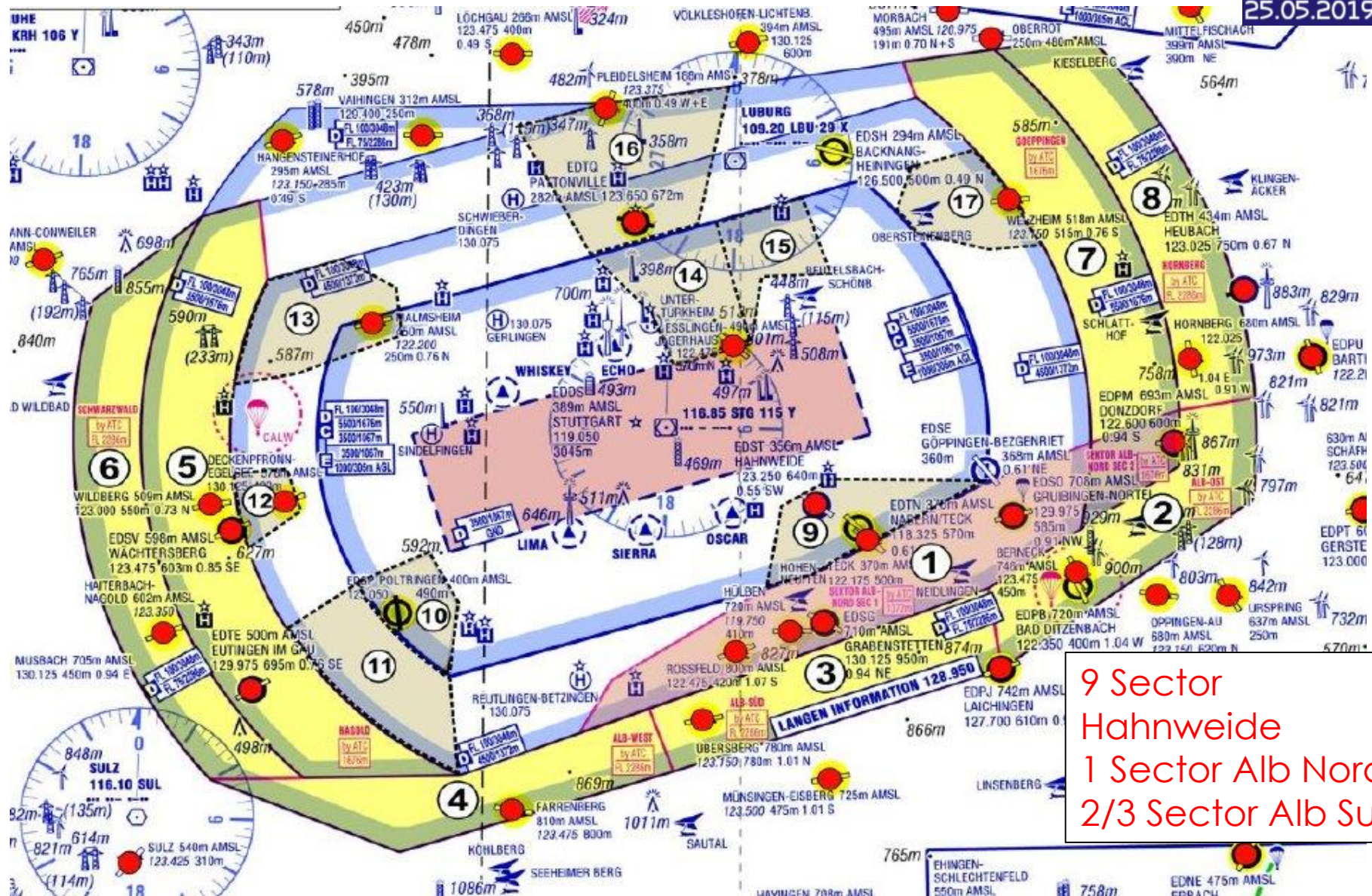
4.1 AIRSPACE STUTTGART



4.2 GLIDER SECTORS

- Varying clearances for Sectors HAHNWEIDE and ALB NORD, all other sectors as described in ICAO-map
- Sector clearances by radio
- Listening watch on the competition frequency (tbd. MHz) when inside the sectors and before start!
- Maximum start-altitude on task-sheet
- Lower start-altitude inside sector Hahnweide and Alb North possible!!

Hahnweide¹⁹
Segelflugwettbewerb
25.05.2019 - 01.06.2019



9 Sector
Hahnweide
1 Sector Alb Nord
2/3 Sector Alb Sued

4.3 FREQUENCIES

- Competition frequency (start/finish) tbd
- Hahnweide-Info (towing/relanding) 125.615
- Segelflug-ATIS Stuttgart 134.500
- Stuttgart ATIS 126.125
- Langen Information 128.950

5. COMPETITION RULES

1. 5.1 Start Line
2. 5.2 Turnpoints (Racing Task)
3. 5.3 Finish line

5.1 START LINE 1 - STANDARD

- Length of start line: 20 km (10km to each direction)
- Maximum start altitude by radio / on task sheet
- Maximum start altitude can differ along the start line due to airspace
- Start line open: last take off + 20 min
- max. Groundspeed: 170 km/h



5.1 START LINE 2 DECLARED START

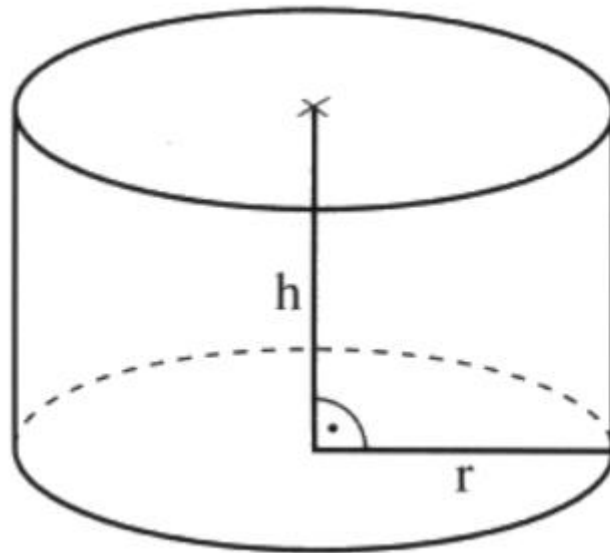
- Definitions as standard start line (1)
- Declare start:
 1. set marker on logger
 2. cross start line 10 min +/- 1 min after setting marker on log file
- Minimum time between marker: 10 min

Start time = time crossing start line

Missing start window: penalty 1 point / sec

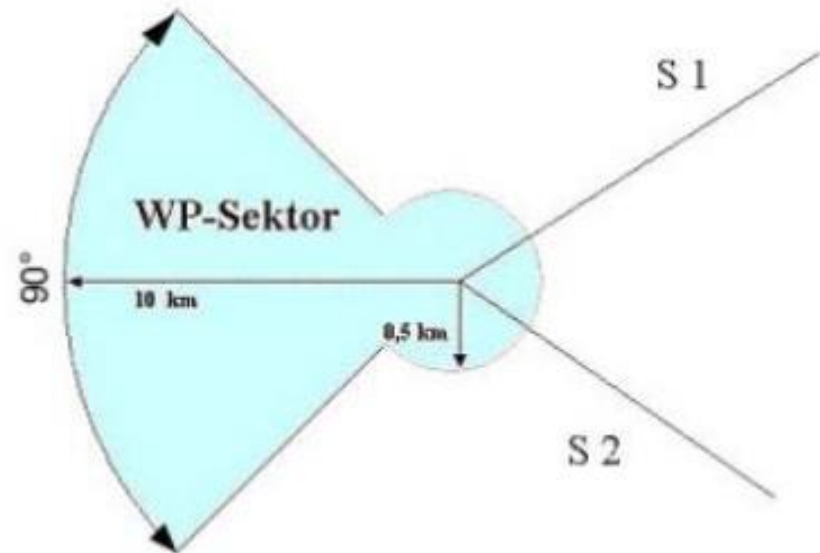
5.1 START LINE 3 CYLINDER

- Radius and max. height of cylinder on task sheet
- Start task by leaving cylinder in horizontal or vertical direction
- No speed limit (disregarding V_{NE} and sound barrier)



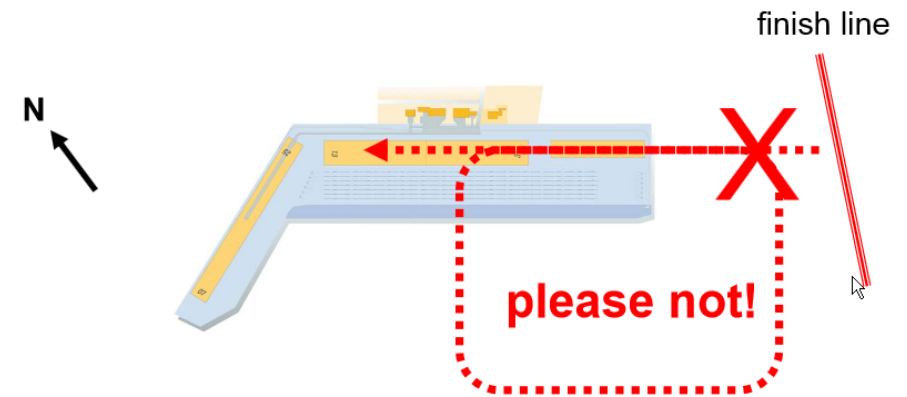
5.2 TURNPOINTS (RACING TASK)

- Circle (radius 500m) + Sector 10km, 90°
- one logger point must be inside



5.3 FINISH LINE

- Approach always from the east (310°)
- Finish-line: width 1km (500 m in each direction), location ~3 km ahead of the airfield
- Report on competition
- frequency 10 km before finish
- No landing possibility at the last 1 km
- In case of low approach: use Nabern Dettingen airfield after crossing finish line!



no traffic pattern RWY 31 after finish!!

5.3 FINISH LINE

In case of low approach:
use Nabern or Dettingen airfield after crossing finish line!
Aero tow from Nabern possible (not for open class)



5.3 FINAL

- Do not pull up after crossing the finish line!
- Continuous descent! (penalties!)
- Attention: power line 1 km ahead of Hahnweide

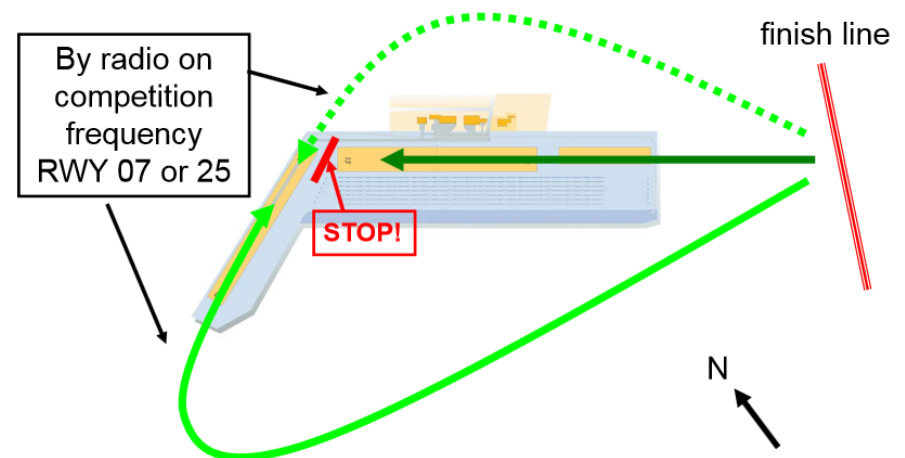


6. LANDING & SCORING

- 6.1 Landing
- 6.2 IGC Files
- 6.3 Outlanding

6.1 LANDING

- After crossing finish line direct landing RWY 31 (long landing, do not cross RWY 25/07)
- Landing on RWY 07 or 25 possible (depending on wind – information by radio)
- Stay straight ahead after landing
- Move your glider out of the runway as soon as possible, if possible by hand



6.2 IGC -FILES

- Upload file at terminal in the briefing hangar or on our website www.wettbewerb.wolf-hirth.de.
- Please upload your file within 45 minutes after landing.

6.3 OUTLANDING

- Please report every outlanding at the competition office (Phone number on task sheet)!
- Or send the outlanding via App.

6.4 ADDITIONAL INFORMATION

- Airspace: see BWLV – Arbeitskreis Sektoren:

<https://www.bwlv.de/verband-service/ak-sektoren/downloads.html>

- Shop (for orders in advance): see Irlshop

<https://www.irl-shop.de/>

HAVE FUN!

