



## SELF BRIEFING

We are happy you are participating at HWW 2018!

Please read this selfbriefing tutorial for Hahnweide gliding competition  
2018

Attachment to local procedures (Ausführungsbestimmungen)

# CONTENT



- 1. Welcome to the Hahnweide
- 2. Briefing
- 3. Grid & Take off
- 4. Airspace & Frequencies
- 5. Competition Rules
- 6. Landing & Scoring

# 1. WELCOME TO THE HAHNWEIDE



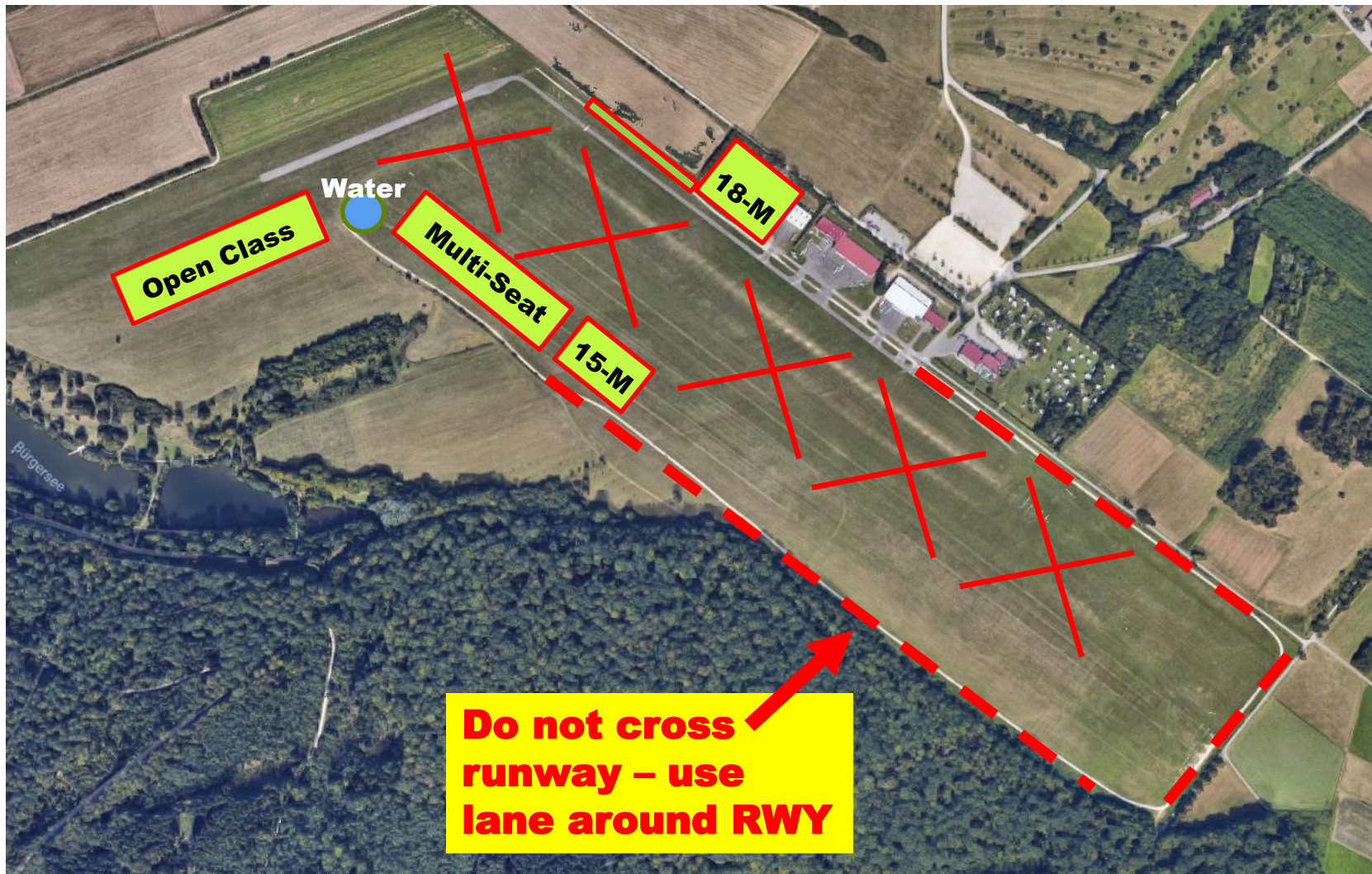
- 1.1 Arriving
- 1.2 Trailer parking
- 1.3 Camping

## 1. 1 ARRIVING



- If you arrive at Hahnweide the week before the competition, please park your trailer on the northern side of the Hahnweide (18-M Class)
- Move trailers of open class, two-seater and standard class to the according parking area not before Thursday.
- Arriving on Friday please follow the signs to the trailer-parking areas of your class
- **Please do not cross the runways!!**

## 1.2 TRAILER PARKING





## 1.3 CAMPING

- If you would like to pitch a tent or park your caravan please look for **Werner Heiner** (mobile phone: +49172-6702103)
- Please do not drive in the camping area by car during the competition
- **NO CAMPING ON THE AIRFIELD! CAMPING ONLY ON THE CAMP SITE!**



## 2. BRIEFING

- Daily 10 AM
- Any changes distributed via SMS to all competitors
- Up-to-date information on the website
- Information by radio (in the grid)

### 3. GRID & TAKE OFF

- 3.1 Rules for gridding
- 3.2 Grid Runway 31
- 3.3 Grid Runway 13
- 3.4 Grid Runway 25
- 3.5 Release Area & Self Launcher

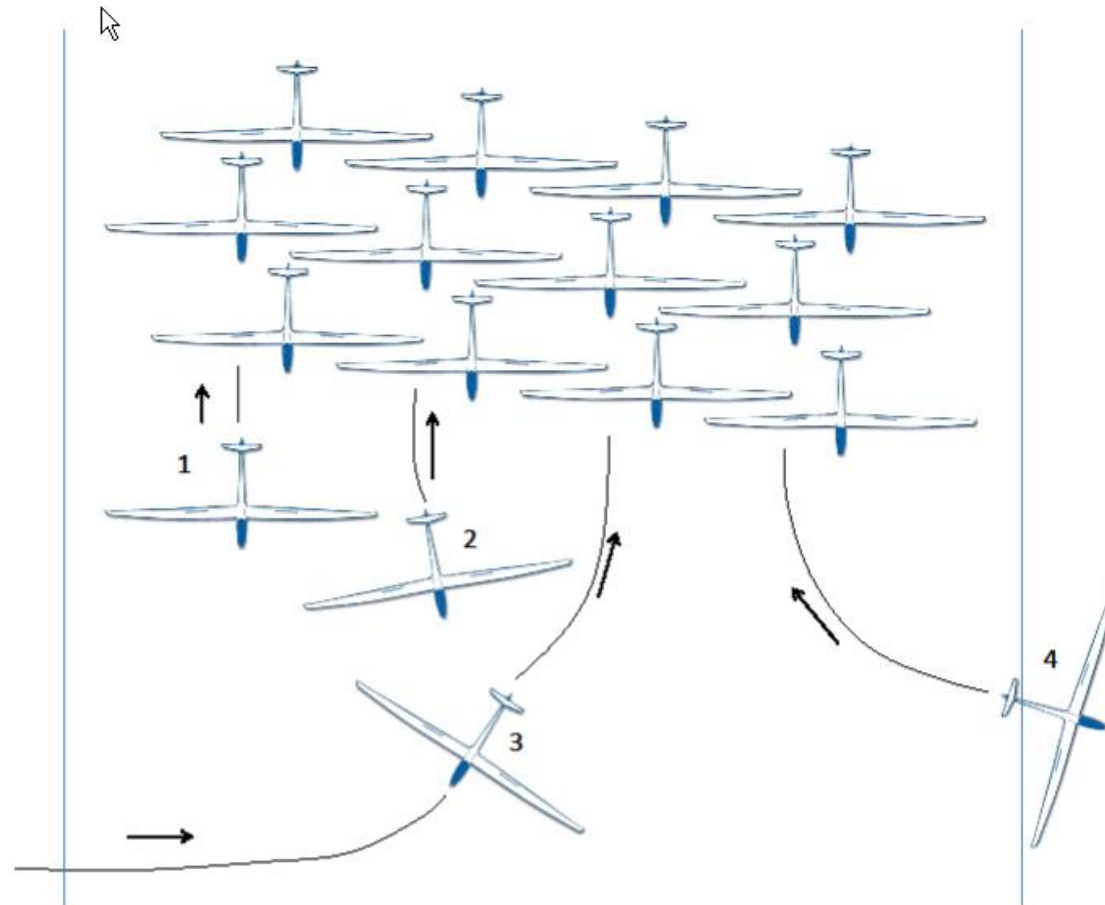


## 3.1 RULES FOR GRID

- Normal flying operations on RWY 25/07 during gridding
- do not drive on the runway!
- It is allowed to fill water in the grid –but do not park your car in the grid!
- No grid order within your class

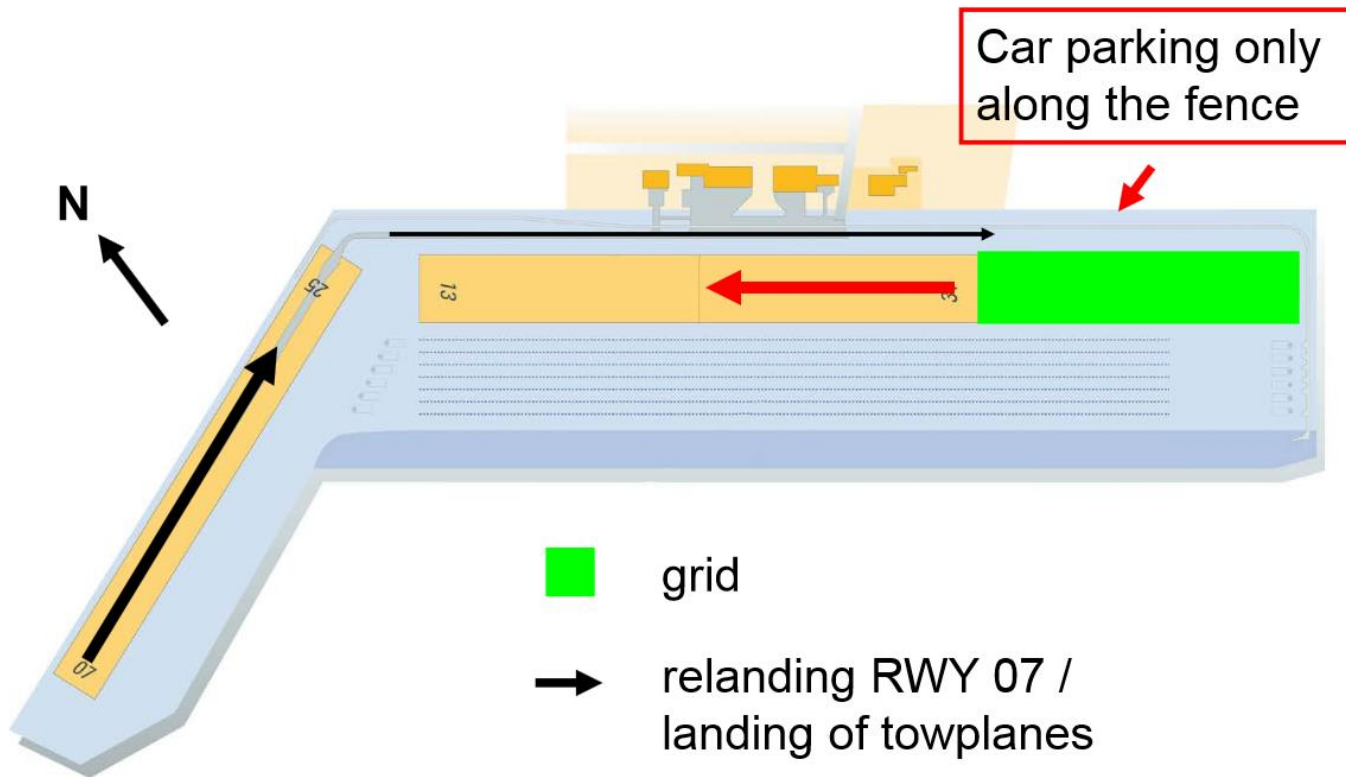
## 3.1 RULES FOR GRID

People will  
instruct you  
finding your  
position



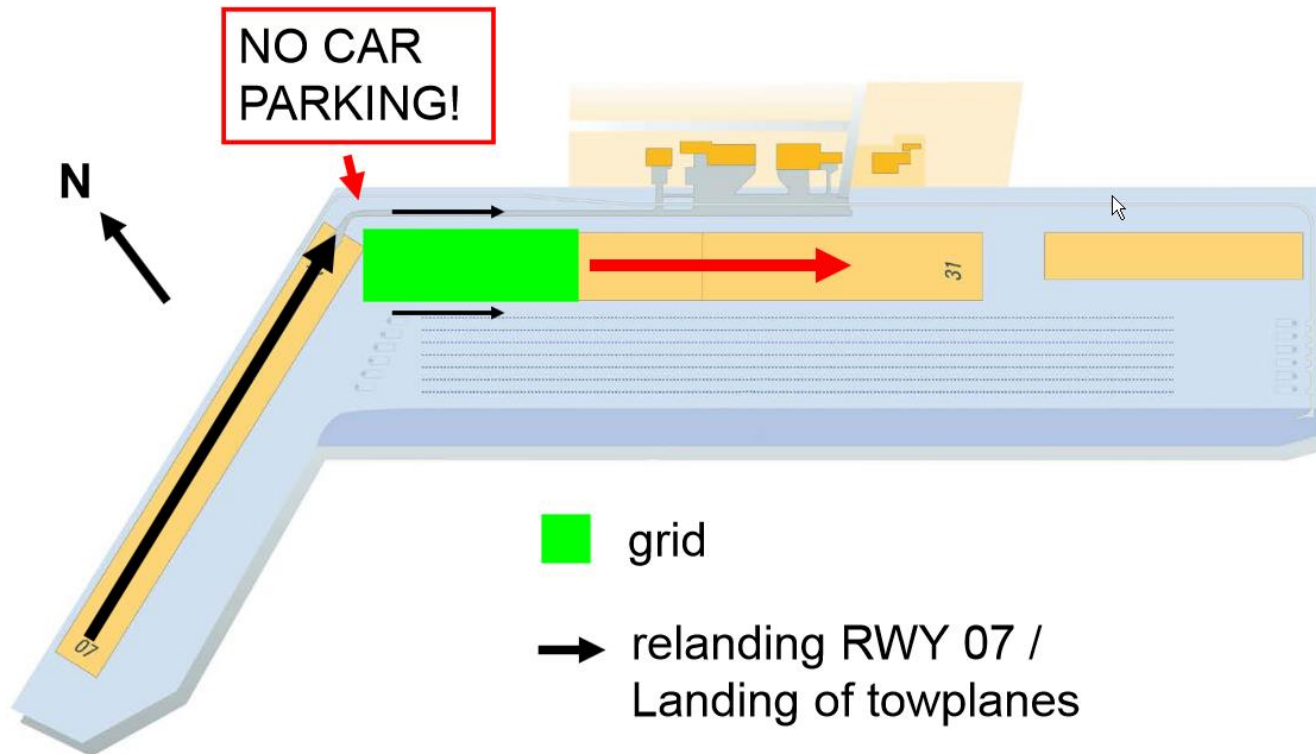
## 3.2 GRID RUNWAY 31

### Take Off RWY 31



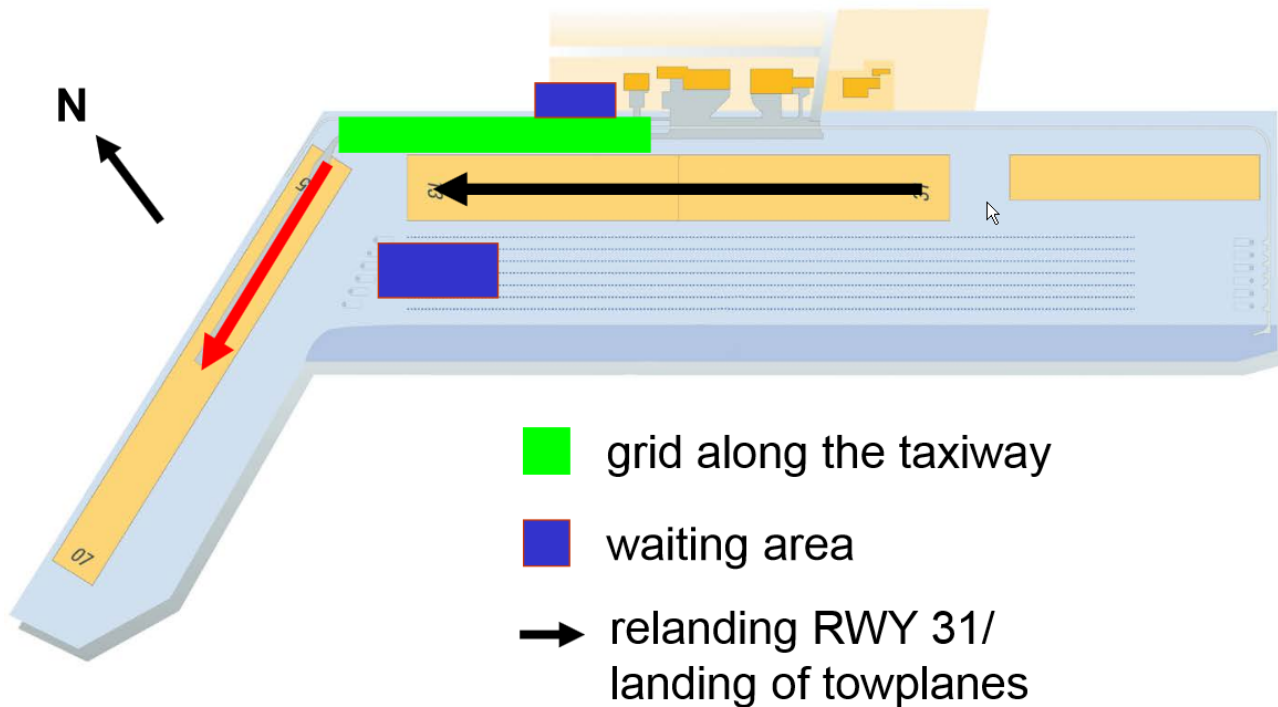
### 3.3 GRID RUNWAY 13

## Take Off RWY 13



## 3.4 GRID RUNWAY 25

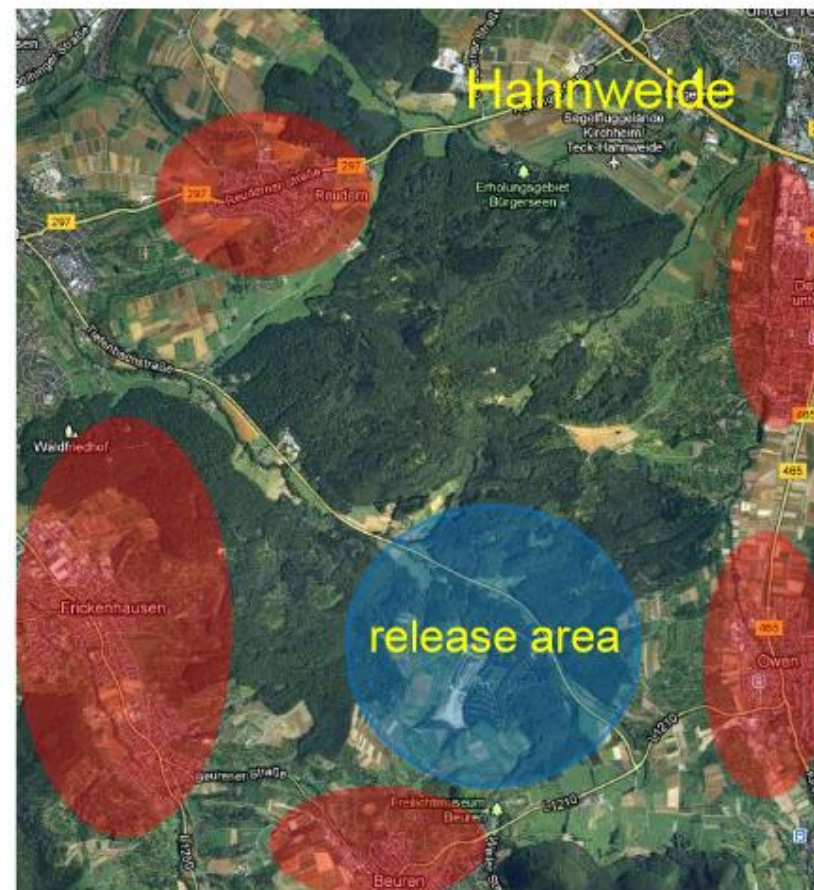
### Take Off RWY 25





## 3.5 RELEASE AREA & SELF LAUNCHER

- Self launching gliders have to follow the towplanes to the release area south of Hahnweide
- Release altitude on task sheet / by radio
- for Turbos: engine test after release within the release area
- Do not overfly villages!

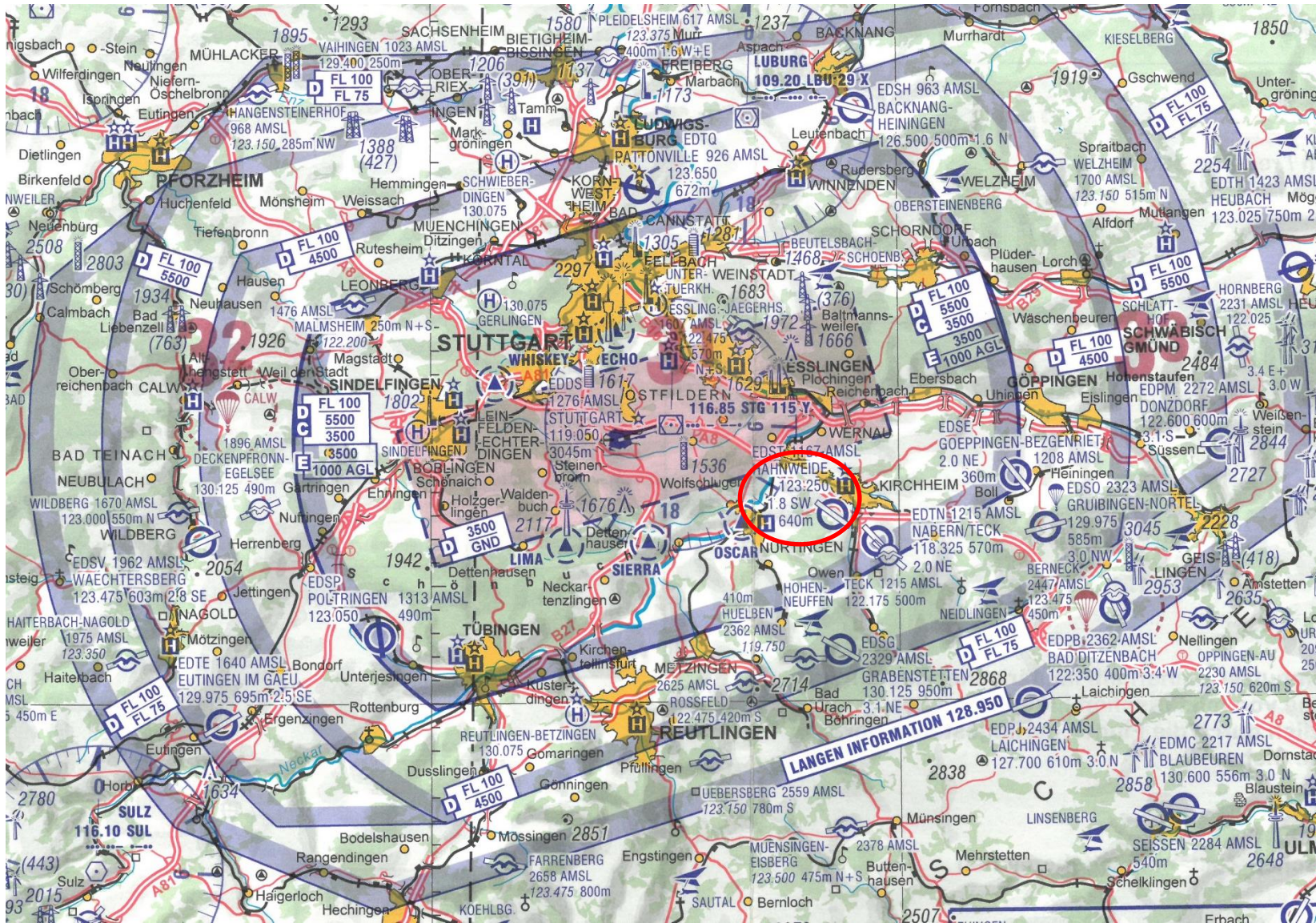


## 4. AIRSPACE & FREQUENCIES

- 4.1 Airspace Stuttgart
- 4.2 Glider Sectors
- 4.3 Frequencies



# 4.1 AIRSPACE STUTTGART

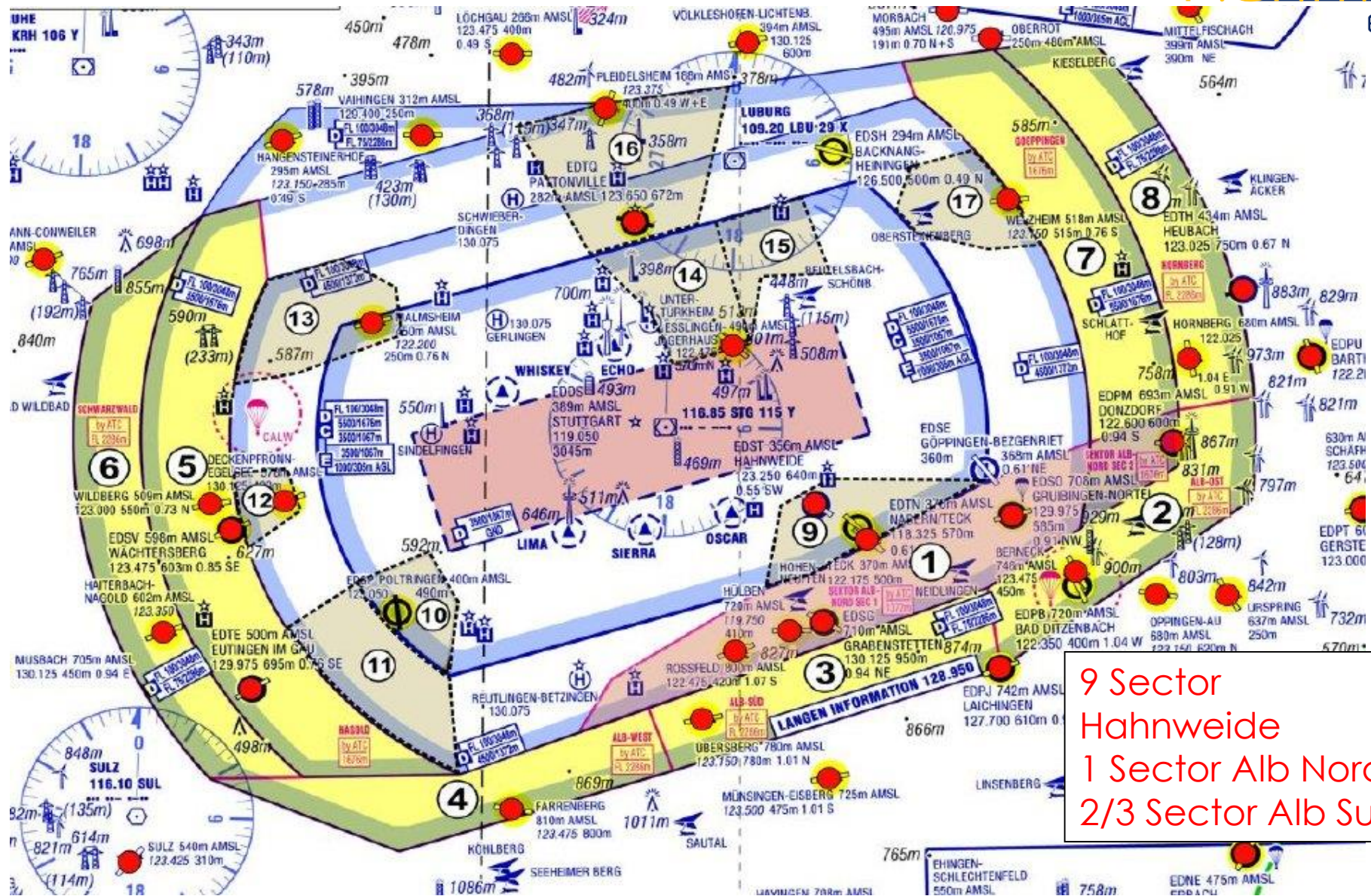




## 4.2 GLIDER SECTORS

- Varying clearances for Sectors HAHNWEIDE and ALB NORD, all other sectors as described in ICAO-map
- Sector clearances by radio
- Listening watch on the competition frequency (134.200 MHz) when inside the sectors and before start!
- Maximum start-altitude on task-sheet
- Lower start-altitude inside sector Hahnweide possible!!

## 4.2 GLIDER SECTORS



9 Sector  
Hahnweide  
1 Sector Alb Nord  
2/3 Sector Alb Sued



## 4.3 FREQUENCIES

- Competition frequency (start/finish) 134.200
- Hahnweide-Info (towing/relanding) 123.250
- Stuttgart-Tower 119.050
- Segelflug-ATIS Stuttgart 134.500
- Stuttgart ATIS 126.125
- Langen Information 128.950

## 5. COMPETITION RULES

- 5.1 Start Line
- 5.2 Turnpoints (Racing Task)
- 5.3 Finish line

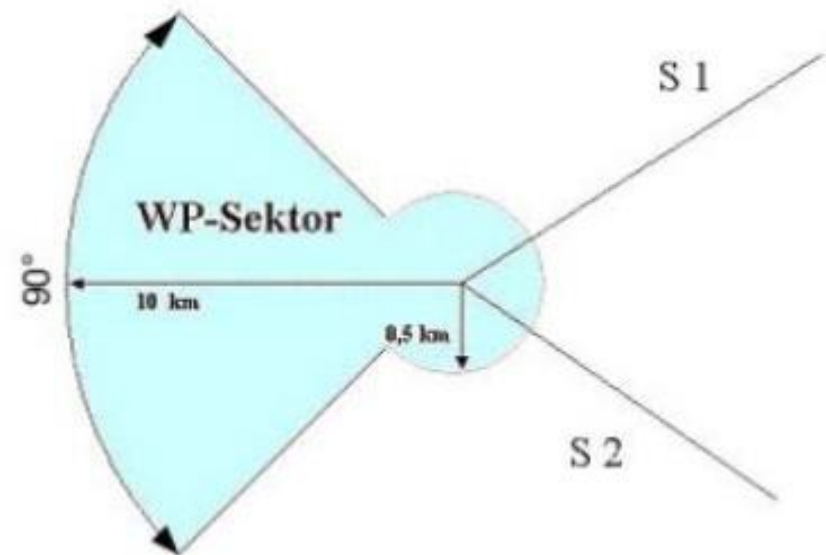
## 5.1 START LINE

- Length of start line: 20km (10km to each direction)
- Maximum start altitude by radio / on task sheet
- Maximum start altitude can differ along the start line due to airspace
- Start line open: last take off + 20 min
- max. Groundspeed: 170 km/h



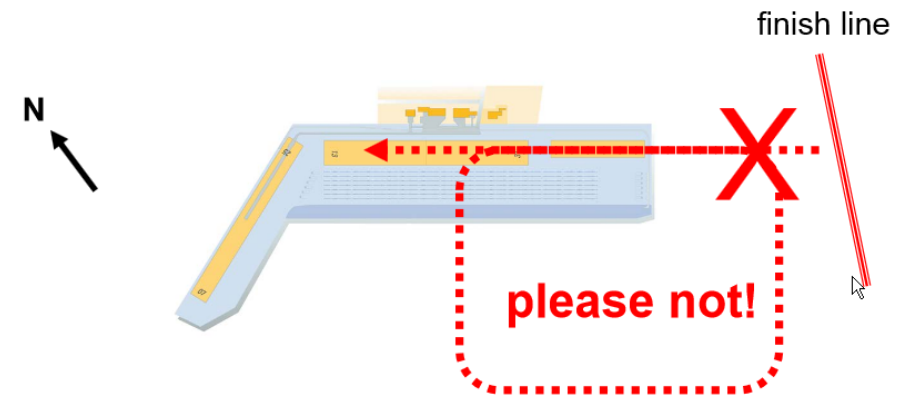
## 5.2 TURNPOINTS (RACING TASK)

- Circle (radius 500m) + Sector 10km, 90°
- one logger point must be inside



## 5.3 FINISH LINE

- Approach always from the east (310° )
- Finish-line: width 1km (500 m in each direction), location ~3 km ahead of the airfield
- Report on competition
- frequency 10 km before finish
- No landing possibility at the last 1 km
- In case of low approach: use Nabern Dettingen airfield after crossing finish line!



**no traffic pattern RWY 31 after finish!!**



## 5.3 FINISH LINE

In case of low approach:  
use Nabern or Dettingen airfield after crossing finish line!



## 5.3 FINAL

- Do not pull up after crossing the finish line!
- Continuous descent! (penalties!)
- Attention: power line 1 km ahead of Hahnweide

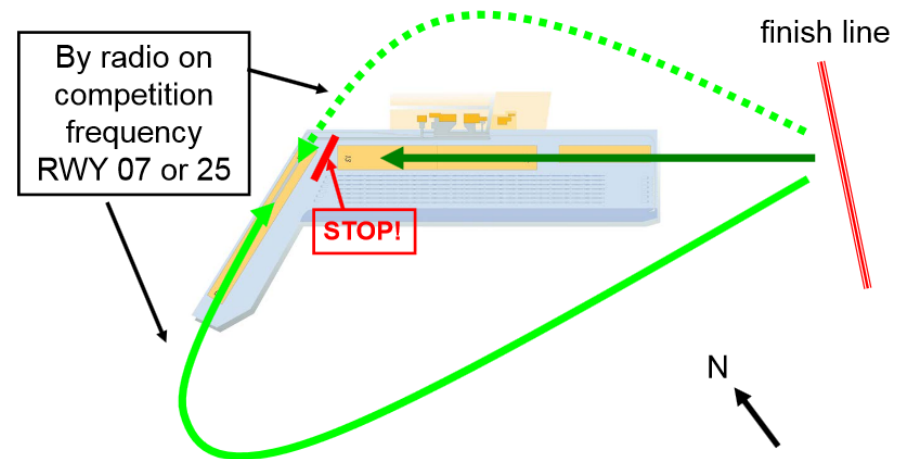


## 6. LANDING & SCORING

- 6.1 Landing
- 6.2 IGC Files
- 6.3 Outlanding

## 6.1 LANDING

- After crossing finish line direct landing RWY 31 (long landing, do not cross RWY 25/07)
- Landing on RWY 07 or 25 possible (depending on wind – information by radio)
- Stay straight ahead after landing
- Move your glider out of the runway as soon as possible, if possible by hand



## 6.2 IGC -FILES

- Upload file at terminal in the briefing hangar or on our website [www.wettbewerb.wolf-hirth.de](http://www.wettbewerb.wolf-hirth.de).
- Please upload your file within 45 minutes after landing.



## 6.3 OUTLANDING

- Please report every outlanding at the competition office (Phone number on task sheet)!
- Or send the outlanding via App.

# HAVE FUN!

